



GS-2000N

Professional Level Long Range UAV LiDAR Scanning System GS-2000N



Wuhan Geosun Navigation Technology Co.,Ltd

Web: www.geosunlidar.com

Cellphone/WhatsApp: +86 15527360208

Email: sales@geosunlidar.com

Add: 4F, Building D, Maker plaza No.8 West Maodianshan Road, East Lake Hi-tech Zone Wuhan City, China

GS-2000N

Professional Level Long Range UAV LiDAR Scanning System GS-2000N

Highly
Integrated

High
Precision

2000m
Ranging

High
Efficiency

Multi
Platforms

Easy
Operation

GS-2000N LiDAR scanning system is a UAV / vehicle measurement system independently developed by Geosun company. It highly integrates laser scanner, GNSS satellite positioning system, INS inertial navigation system and camera(full frame), and can quickly obtain high-precision laser point cloud number. It can be widely used in Digital city construction, Industry, Land survey, Forestry and Agriculture

System Parameter

Accuracy	10cm@600m	Dimension	254*133*125mm
Weight	3.3kg	Storage	512 GB Solid State Drive Support 128GB TF Card
Working Temperature	-20° ~ +55°	Carrying Platform	Multi Rotor/VTOL/Vehicle

Laser Unit

Max Range	2000m	FOV	75~90°
Laser Class	1550nm	Range Accuracy	3mm@100m
Laser type	Single line mechanical scanning	Echo	Seven Echo

POS Unit

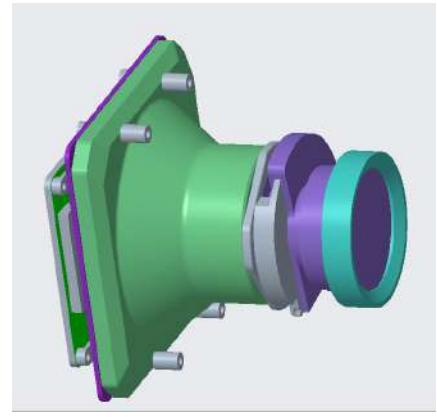
Update Frequency	200HZ	Position Accuracy	≤0.05m
Pitch /Roll Accuracy	0.003°	GNSS Signal Type	GPS L1/L2/L5, GLONASS L1/L2 BDS B1/B2/B3, GAL E1/E5a/E5b
Heading Accuracy	0.010°		

Pre-Processing Software

POS (Trajectory) Software	Shuttle	Point Cloud Software	gAirHawk
---------------------------	---------	----------------------	----------

Camera

FOV	57° or 79°
Effective Pixel	45 MP
Focal Length (mm)	40



Operation Efficiency Table

Flight Height (m)	Density(pts/m ²)@10m/s	Single Flight Operation(km ²)
200	135	2.8
400	40	5.6
600	10	8.4

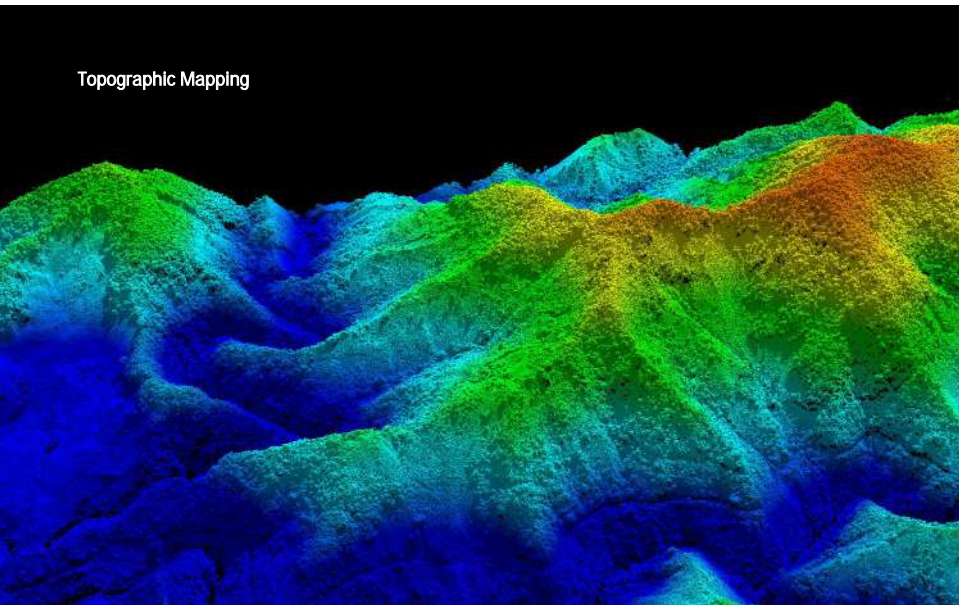
Mission Planning Software (optional)

Mission Planning Software

Customized Route Planning Software – WayPoint Master

Application Case

Topographic Mapping



Model:GS-2000N

Carrying Platform: Manned Aircraft or VTOL Fixed

speed: 20-35 m/s

Application: Topographic mapping

Project location: South America

