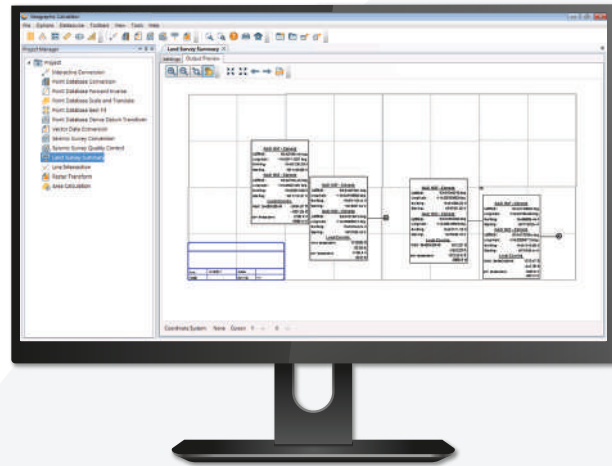




Powerful coordinate conversion and datum transformation

Geographic Calculator® is a powerful geodetic software for coordinate conversion and datum transformation. In addition to single point, point database, and file conversion tools, this highly accurate transformation software includes many specialized tools. It supports a wide range of file formats, and is built on the foundation of the largest geodetic parameter database available anywhere.



Geographic Calculator's data source includes:

- More than 5,000 pre-defined projected coordinate systems
- More than 1,800 coordinate transformations
- More than 500 horizontal datums
- More than 150 vertical datums (for Lidar transformations)
- More than 80 various unit definitions
- Full matches to ESRI, MapInfo, and Autodesk
- Custom coordinate systems

Tools and features in Geographic Calculator include:

Interactive Conversions with formatted output reports

Select your source and destination coordinate systems, enter your coordinates, choose the datum transformation you would like to use, and then press the "Calculate" button.

Point Database Conversions

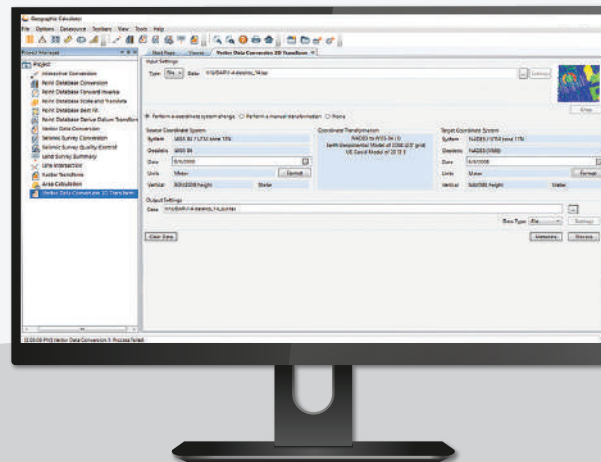
Convert large tables of coordinate data in a powerful and flexible spreadsheet interface.

Largest commercially available database of coordinate systems - Built on international standards with fully exposed parameters for accurate and reproducible results. This includes more vertical datums and time dependent coordinate systems than any other package.

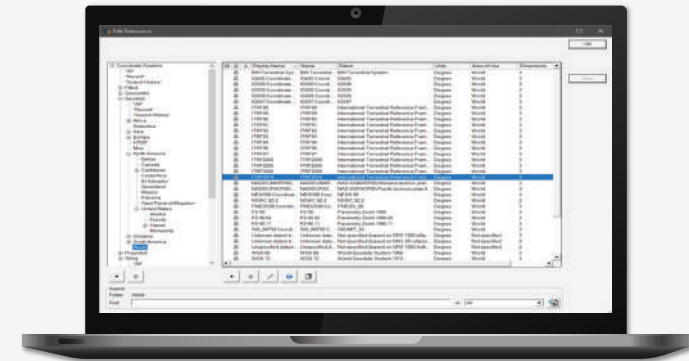
Vector/Raster Data Conversions

Supporting about 30 popular raster and vector data types from GIS and CAD applications, Geographic Calculator can make short work of large batch conversion projects or simple one off data conversions with powerful handling and preservation of specialized CAD geometry types.

Learn more about the software and download a trial today at bluemarblegeo.com/geographic-calculator



GeoCalc SDK® is a sophisticated coordinate transformation toolkit that allows developers to embed Blue Marble's geodetic technology into their custom or off-the-shelf geospatial software.

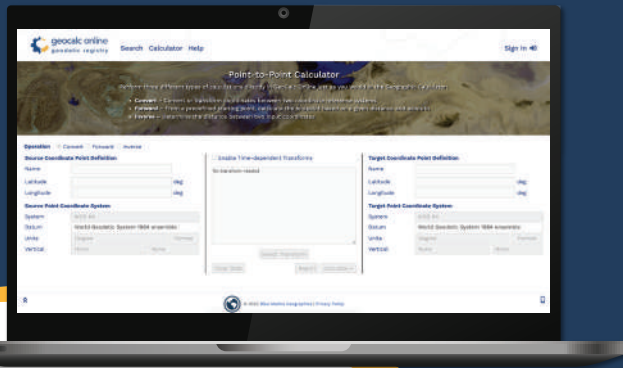


Functionality Highlights:

- The most comprehensive coordinate system library available
- An XML datasource with full matches to the EPSG database
- The ability to edit and create custom geodetic parameters or definitions
- Unmatched geoid or vertical datum support, including support for NOAA's VDatum systems
- Cross-platform C++ library available for Windows, Linux, Mac, and Java
- Supports NADCON5 for NOAA's new North American Terrestrial Reference Frame 2022



GeoCalc Online is a comprehensive library of geodetic definitions with a built-in coordinate conversion and calculation tool, the Point-to-Point Calculator.



The Point-to-Point Calculator supports coordinate conversions as well as forward and inverse calculations. Calculations can be fully customized for your workflow. Source and target coordinate systems can be selected from GeoCalc Online's comprehensive library.

Advanced search functionality, the ability to save favorites, and generate reports help to streamline workflows.

[Explore the geodetic library and the Point-to-Point Calculator at geocalconline.com](#)

Software Training

Customized Sessions

A tailored curriculum focused on the needs of a company or organization

Public Sessions

A hands-on class for GIS pros and beginners

Self-Guided Sessions

Downloadable series of instructions and GIS data for learning at one's own pace

Technical Support

Email our Tech Team:

geohelp@bluemarblegeo.com

Subscribe to our YouTube Channel:

youtube.com/user/BlueMarbleWebinars

Other Resources

Knowledge Base:

bluemarblegeo.com/knowledgebase/

The Global Mapper Forum:

globalmapperforum.com

About Blue Marble

Blue Marble Geographics® is a geodetic and GIS software company that provides cutting-edge yet affordable products designed for both novice and experienced geospatial professionals. Blue Marble's expertise spans a broad spectrum of the geospatial technology sector with a particular focus on coordinate conversion, Lidar and photogrammetric point cloud processing, geospatial software development kits, and user-driven product development.

bluemarblegeo.com



Geographic Calculator® — coordinate transformation software designed to ensure accuracy in any geospatial data management process.

